

The Challenge Machinery Company provides owner's manuals on its products solely as a courtesy to its customers. See the information below before using this manual.

These manuals are for reference only. These manuals include products which are noncurrent, unsupported or no longer produced by The Challenge Machinery Company, and are provided solely as an accommodation to our customers. By providing these manuals, The Challenge Machinery Company makes no representation or warranty as to the products, their current condition, or their suitability or fitness for use in any particular application, which are the sole and independent responsibility of the product owner and user.

Older products may not comply with current safety procedures, guidelines or regulations, and it is the product owner's and user's responsibility to evaluate the suitability and fitness of the products in their current use and application. The Challenge Machinery Company makes no representation, warranty or recommendation regarding any modifications which may be required on non-current or unsupported products. The Challenge Machinery Company assumes no liability for any modification or alteration to any Challenge product, and any such modification or alteration to any Challenge product is not authorized by The Challenge Machinery Company. The availability of these manuals is solely for the purpose of providing reference information for the products.

This manual may not be complete in all aspects of product maintenance and repair. **All products should be used only by qualified and properly trained personnel, following proper safety procedures.** All products should be regularly inspected and maintained, and their condition, application and use should be periodically evaluated by qualified personnel. Only qualified and properly trained technicians should perform maintenance, repair and replacement procedures. Attempting these procedures without proper training may cause machine damage or operator injury!

Products may be unsupported by The Challenge Machinery Company due to age or the unavailability of parts from their original manufacturer. No parts or product support will be available to repair or maintain unsupported products. Older products may not be UL listed (if the product does not have a UL label it is not a listed product), and may not comply with applicable installation or other regulations or requirements if relocated to a new facility. Many municipalities require a product to be UL listed before an electrician will connect power to them. Often the cost of updating an older product to comply with current safety regulations is greater than the value of the product.



The Challenge Machinery Company
6125 Norton Center Drive
Norton Shores, MI 49441-6081 USA

ChallengeMachinery.com

HANDY-JOG

Instruction and Parts Manual

Series: A

Sold and Serviced by

F.100A

June 2016



SOUTHWEST
BUSINESS PRODUCTS LTD.

1.0 Warranty

* WARRANTY INFORMATION *

PLEASE REVIEW THE ENCLOSED WARRANTY INFORMATION SHEET

It is very important that you read and understand the conditions outlined in the *Warranty Information Sheet* attached to the outside of the shipping container of your machine.

The *Warranty Information Sheet* must be filled out completely and returned to THE CHALLENGE MACHINERY COMPANY in order for the warranty to be issued for this machine.

2.0 Safety Precautions

2.1 Caution Label



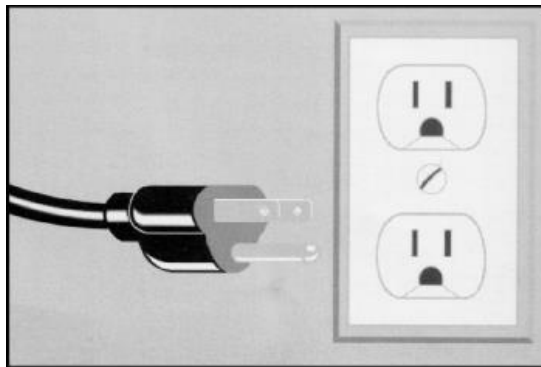
Electrical Shock Hazard!

This symbol indicates an electrical shock hazard exists behind the panel on which it is found. Power should be disconnected before removing the panel.

2.2 Safety

The following list of safety precautions should be observed:

- The machine should only be serviced by an authorized Challenge® service technician.
- Do not place hands behind the paper tray.
- Always disconnect power to the machine before servicing. Remove plug from wall socket.

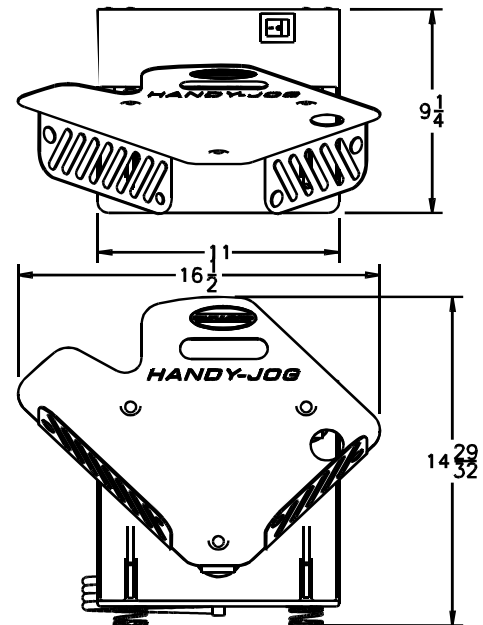


Challenge® is a registered trademark of The Challenge Machinery Company

6125 Norton Center Drive • Norton Shores MI 49441-6081

Copyright© 2016 by The Challenge Machinery Company. All rights reserved. Printed in the USA.

3.0 Specifications



General:

Pile height	3" maximum
Stock size	up to 11" X 17"
Tray dimensions	11" X 13-1/2"
Width	16-1/2"
Depth	9-1/4"
Height	14-29/32"
Net weight (approx.)	15 lbs.
Shipping weight (approx.)	17 lbs.

Electrical: 120V, single-phase, 60 HZ, 0.5 Amp
(15 Amp service size)
230V, 50/60 HZ
Maximum Operating Temperature: 100°F/38°C

Options: Footswitch E-875-6
11 x 17 Paper Support K-57211 (see page 5)

Optional Machines: Check Jogger 57203 (see page 9)
Large Tray Jogger 57212 (see page 10)

4.0 Installation and Operation

4.1 Installation

After removing the jogger from its box, place it away from the edge of a flat surface. *Do not allow power cord to hang where it could accidentally be caught, thereby pulling the machine to the floor.* Plug the power cord into a nearby wall socket. The machine is ready to operate.

See section 6.4 K-57211 Paper Support Option on page 8 for instructions on installing the optional paper support.

4.2 Optional Footswitch

To install the optional footswitch, first plug the footswitch into a nearby wall socket. Then plug the jogger into the footswitch plug. Switch on the jogger.

Note: In order for the jogger to operate with the footswitch option, the machine's main power switch must be ON.

Place the footswitch (E-875-6) in a convenient location that is not a trip hazard.

4.3 Operation

Switch on the machine and place a pile of paper in the paper tray. Switch off the machine when the pile has been jogged to satisfaction. Remove the pile from the tray. The pile will complete jogging more quickly if assisted by tapping it by hand. Smaller plies will jog more quickly.

Note: Without a pile in the tray, the jogger is quiet. Make sure to switch off the machine when the jogger is not in use. This will increase the lifetime of the machine and conserve energy.

5.0 Troubleshooting

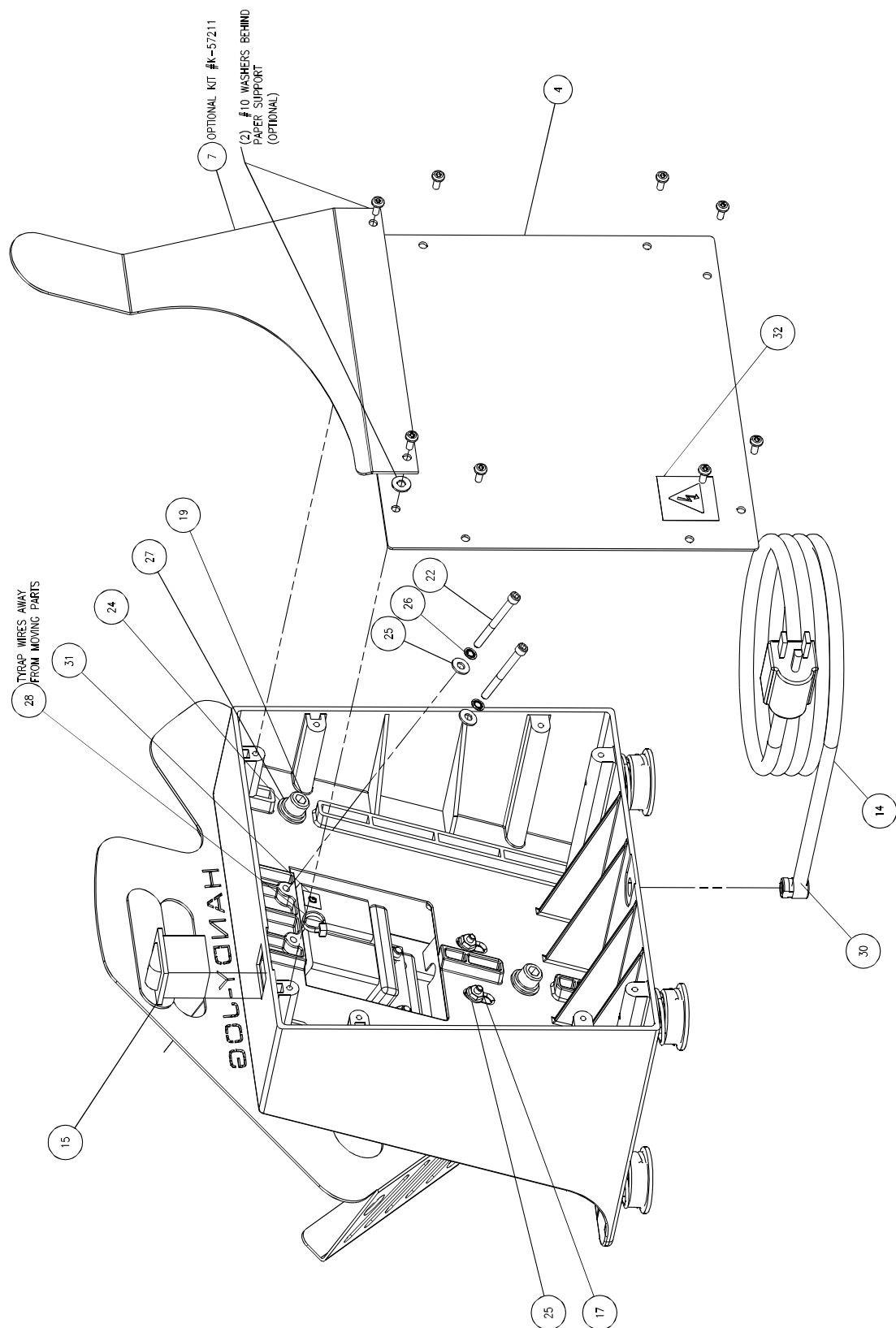
The following table lists potential causes to operational problems:

Problem	Solutions
The machine won't operate	<ol style="list-style-type: none">1. Plug cord into wall socket; switch on machine2. Check circuit breaker3. If footswitch is installed, make sure the power switch on the machine is switched on.4. Malfunctioning power switch5. Damaged electromagnet6. Actuator on the tray has loosened
Jogging power has reduced	<ol style="list-style-type: none">1. Misadjusted actuator bracket. Adjust gap between actuator and magnet to .12 inches. This is equivalent to 30 sheets of 20-pound bond paper.2. Low voltage from wall socket or operating with an extension cord.
Loud banging sound is heard	<ol style="list-style-type: none">1. Misadjusted actuator bracket. Adjust gap between actuator and magnet to .12 inches. This is equivalent to 30 sheets of 20-pound bond paper.
Unusual vibration noise	<ol style="list-style-type: none">1. Either the actuator bracket or the electromagnet has loosened.

6.1 Series A



6.2 Series A (continued)



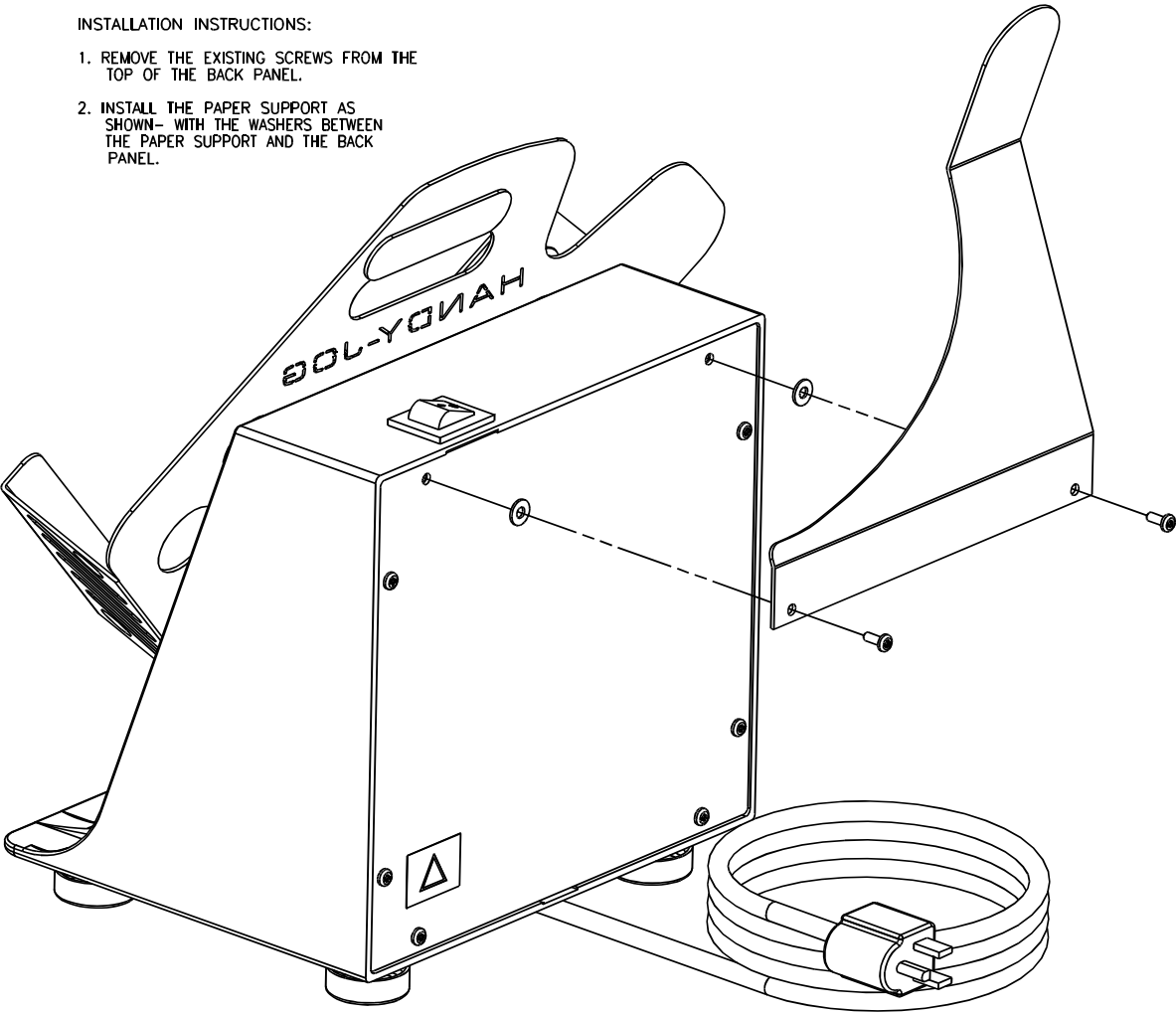
6.3 Series A (continued)

NO.	PART NO.	DESCRIPTION	QTY
1	41074	POLYURETHANE DOT	4
2	57012	SPRING	4
3	57201	BASE	1
4	57202	COVER	1
5	57205	JOGGING TRAY	1
6	57208	ELECTROMAGNET COVER	1
7	57209	PAPER SUPPORT	1
8	57213	GUARD	1
9	57214	ACTUATOR- MACHINED	1
10	57220	FOOT	4
11	57221	WASHER PLATE	1
12	40016-4	MOUNT- VIBRATION	3
13	E-3052	ELECTRO-MAGNET (120V)	1
	E-3052-1	ELECTRO-MAGNET (230V)	
14	E-3053	POWER CORD- JOGGER	1
15	E-1140-11	ROCKER SWITCH	1
16	H-6414-4	NUT - 1/4-20 WHIZ LOCK	2
17	H-6417-#10	NUT - #10-24 HEX	4
18	H-6910-604SS	SCREW - 3/8-16 X 1/2 BUT. HEAD CAP STAINLESS	3
19	H-6918-606	SCREW - 3/8-16 X 3/4 SOCKET HEAD CAP	3
20	H-6918-102404	SCREW - #10-24 X 1/2 SOCKET HEAD CAP	2
21	H-6918-102412	SCREW - #10-24 X 1-1/2 SOCKET HEAD CAP	2
22	H-6918-102416SS	SCREW - #10-24 X 2 SOC HEAD CAP, STAINLESS	2
23	H-6969-0804	SCREW - #8 X 1/2 PAN HD PLASTITE	12
24	H-7321-6	WASHER - 3/8 SAE PLAIN	3
25	H-7321-#10	WASHER - #10 SAE PLAIN	10
26	H-7324-#10	WASHER - #10 INT TOOTH	2
27	H-7327-12	WASHER - 3/8 MEDIUM LOCK	3
28	S-1694	TYRAP	1
29	S-1076-2	CHALLENGE LABEL	1
30	S-1350-9	STRAIN RELIEF BUSHING	1
31	S-1781-42	LABEL - GROUND	1
32	S-1781-50	LABEL - ELECTRIC SHOCK	1

6.4 K-57211 Paper Support Option

INSTALLATION INSTRUCTIONS:

- 1. REMOVE THE EXISTING SCREWS FROM THE TOP OF THE BACK PANEL.
- 2. INSTALL THE PAPER SUPPORT AS SHOWN- WITH THE WASHERS BETWEEN THE PAPER SUPPORT AND THE BACK PANEL.

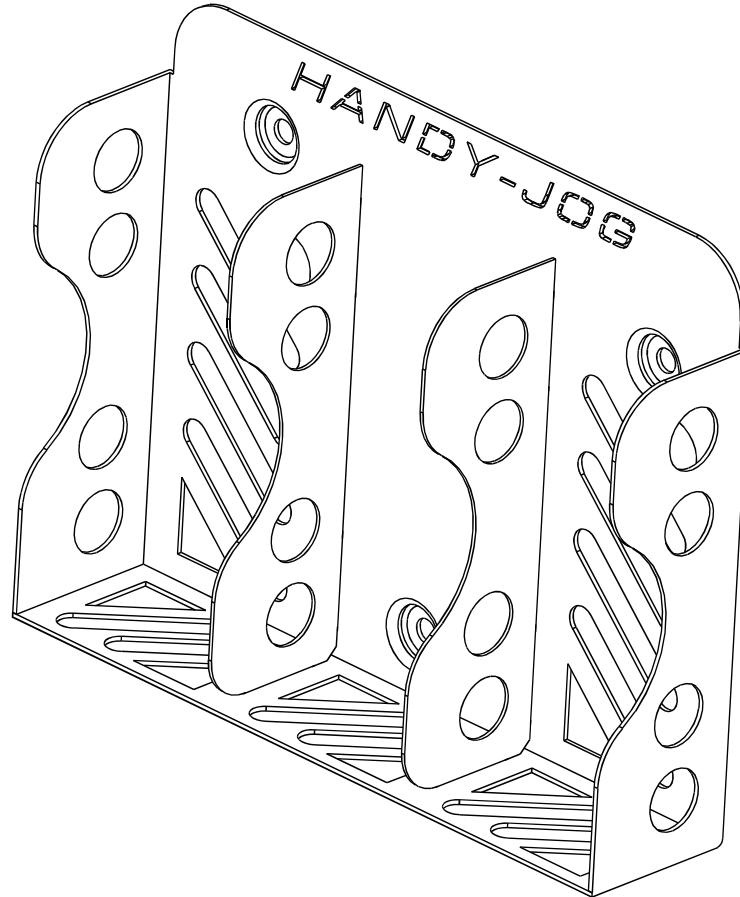


ITEM	PART NO.	DESCRIPTION	QTY
1	57209	PAPER SUPPORT	1
2	H-7321-#10	WASHER - #10 SAE PLAIN	2

6.5 57203 Optional Check Jogging Tray

Tools required:

1. 7/32 hex wrench
2. Phillips screw driver
3. 7/16 wrench or socket
4. Long ball-end, T-Handle hex wrench (5/32)

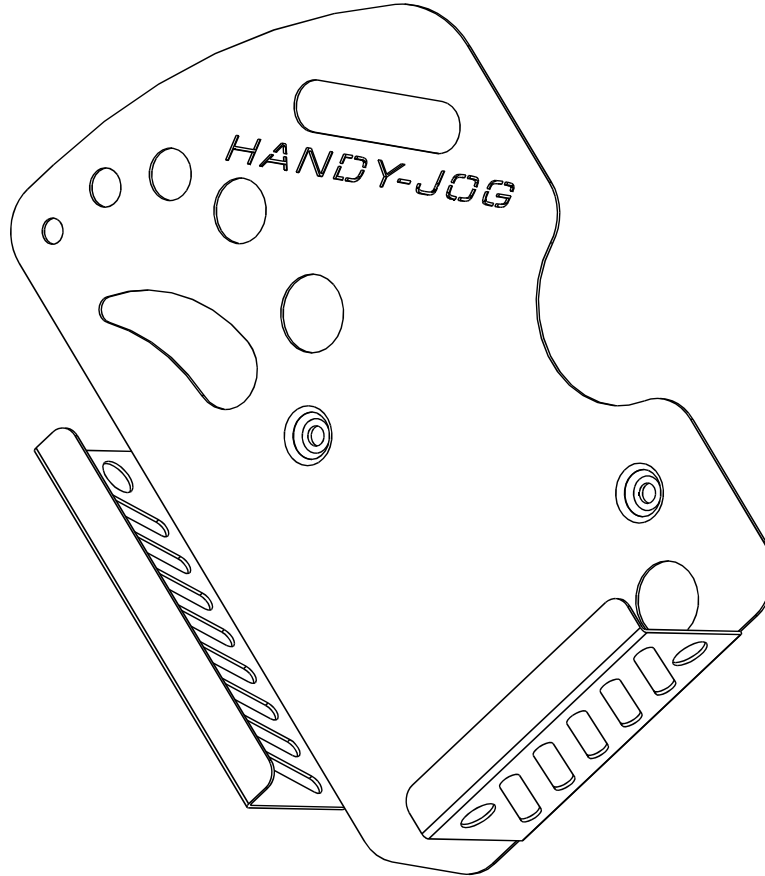


1. Unplug the machine.
2. Remove standard tray using a 7/32 hex wrench.
3. Remove the rear cover using a Phillips head screwdriver.
4. Remove the actuator block from the standard tray using a 7/16 wrench or socket.
5. Install the actuator block onto the check tray but do not tighten the nuts.
6. Install the check tray onto the Handy-Jog using the original screws.
7. Lay the machine on its side, tray down.
8. Insert 30 sheets of 20# bond paper between the actuator and electromagnet (.12" thick).
9. Squeeze the actuator and electromagnet together with the paper pile in between while carefully tightening the nuts that hold down the actuator block.
10. Remove the paper pile from between the actuator and electromagnet.
11. Plug in the machine and test with stacks of checks.
12. Readjust as necessary by adding or removing sheets from the paper pile used to adjust the gap.
13. After satisfactory jogging is achieved, use the long T-Handle wrench to adjust the two locking screws on the actuator up to the mounting studs on the tray. Access the two screws through two holes on the underside of the plastic case.
14. Reinstall the rear cover.

6.6 57212 Optional Large Tray

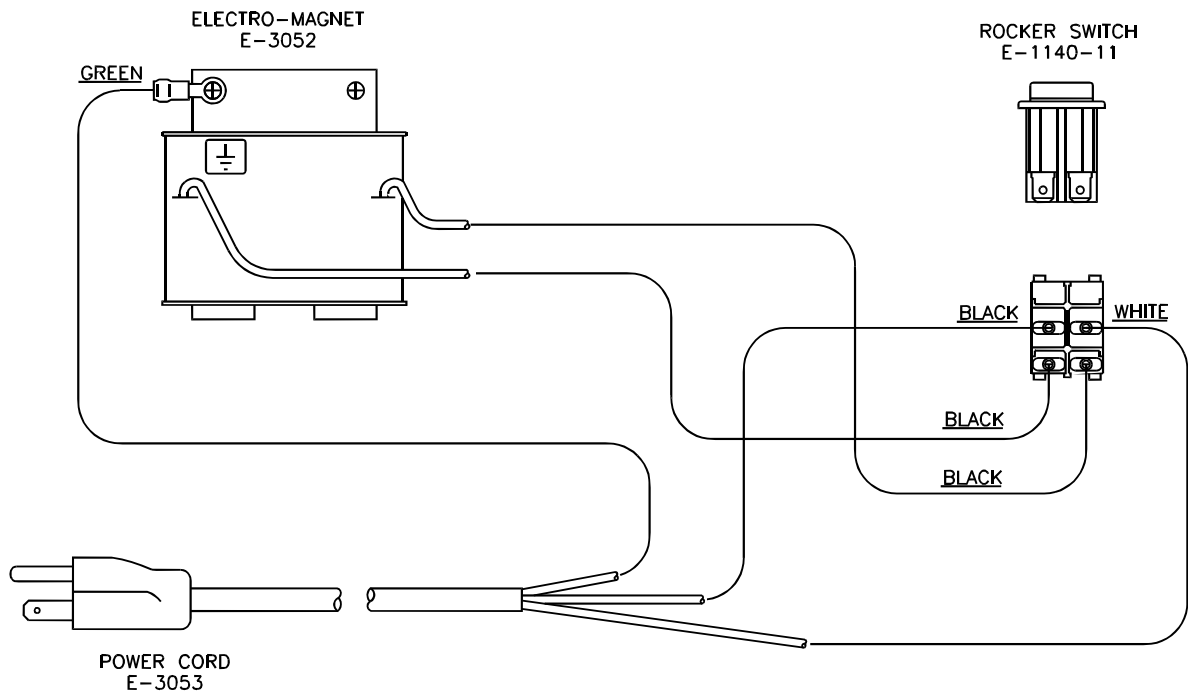
Tools required:

1. 7/32 hex wrench
2. Phillips screw driver
3. 7/16 wrench or socket
4. Long ball-end, T-Handle hex wrench (5/32)



1. Unplug the machine.
2. Remove standard tray using a 7/32 hex wrench.
3. Remove the rear cover using a Phillips head screwdriver.
4. Remove the actuator block from the standard tray using a 7/16 wrench or socket.
5. Install the actuator block onto the large tray but do not tighten the nuts.
6. Install the large tray onto the Handy-Jog using the original screws.
7. Lay the machine on its side, tray down.
8. Insert 22 sheets of 20# bond paper between the actuator and electromagnet (.083" thick).
9. Squeeze the actuator and electromagnet together with the paper pile in between while carefully tightening the nuts that hold down the actuator block.
10. Remove the paper pile from between the actuator and electromagnet.
11. Plug in the machine and test with a full pile of 11 X 17.
12. Readjust as necessary by adding or removing sheets from the paper pile used to adjust the gap.
13. After satisfactory jogging is achieved, use the long T-Handle wrench to adjust the two locking screws on the actuator up to the mounting studs on the tray. Access the two screws through two holes on the underside of the plastic case.
14. Reinstall the rear cover.

6.7 Wiring Diagram





F.100A

June 2016